



**Fracture Modeling Inc.**

FRACMOD uses leading industry software  
at every stage from hydraulic fracture  
modeling to reservoir simulation.

# FRACMOD

## Corporate Presentation

**Fracture Modelling Inc.**

[www.fracmod.com](http://www.fracmod.com)

*FRACMOD is available to be your in-house “Technical Team-on-Tap”*

**Software:** investment of bringing various software in-house can be steep and even cost prohibitive

**Professional Expertise:** in both software proficiency and technical competence is also costly

This is compounded by the fact that both software and services are often required on an intermittent, project specific basis only, resulting in inefficient usage.

**This is where FRACMOD comes in...**

- Fully integrated team by bundling software and professional services, in discrete units depending on the client’s requirements, FRACMOD can ensure that operators have access to the best combination of both to provide cost effective, convenient solutions.

# FRACMOD Consulting Firm

- Boutique consulting firm in Calgary, AB
- “One-Stop-Shop” for fully integrated reservoir studies
- Team of experts with over 25 years of domestic and international experience in the oil and gas sector



**FRACMOD team is focused on hydraulic fracture modeling, reservoir characterization and reservoir simulation**

# Mission Statement

---

**Assist** our clients in making **informed decisions**  
at a **low price point** by providing  
an **experienced** technical team  
fully equipped with the **latest software**

Offering field-scale, and fully integrated horizontal well fracture modeling  
and reservoir simulation

# Swiss Army Knife Effect

**Business as Usual**

**Team on Tap**

Executive

CEO, CFO

Support

IT, HR, Finance

Sub-Surface  
Team

Senior Engineer

Senior Geologist

Senior Engineer

Senior Geologist

Engineer

Geo-Scientist

Junior Engineer

Junior Geologist

Consultant

Consultant

Consultant

Consultant

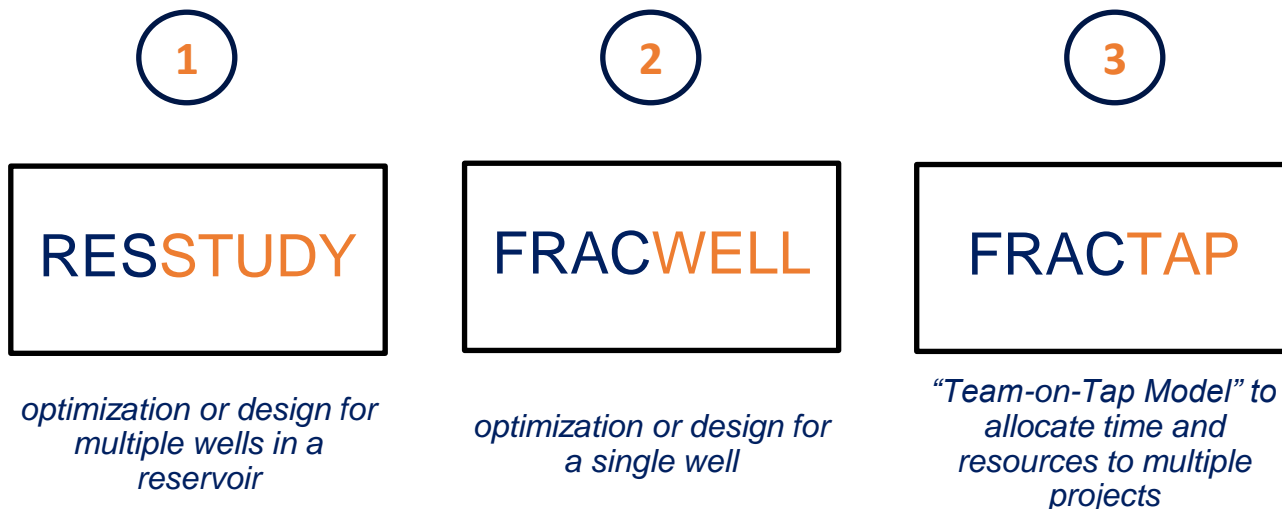
**FRACMOD**



**One-Stop-Shop for all sub-surface needs - experience team equipped with the right tools to provide fast and reliable insights**

# Service Offerings

## Three Business Models



All of our business models incorporate elements of our **FRACMOD Workflow** and have access to our proprietary **FRACMOD Oil Cube**

**Business models that will improve production efficiency, minimize cost, and deliver optimal solutions**

1

# RESSTUDY

**RESSTUDY** offers conventional consulting practices to complete specific projects catered to your development plan

Pad Design

Well spacing, well length, stage spacing, and infill drilling

Fractured Reservoir

3D geo-model PVT, black oil model, compositional

Enhanced Oil Recovery

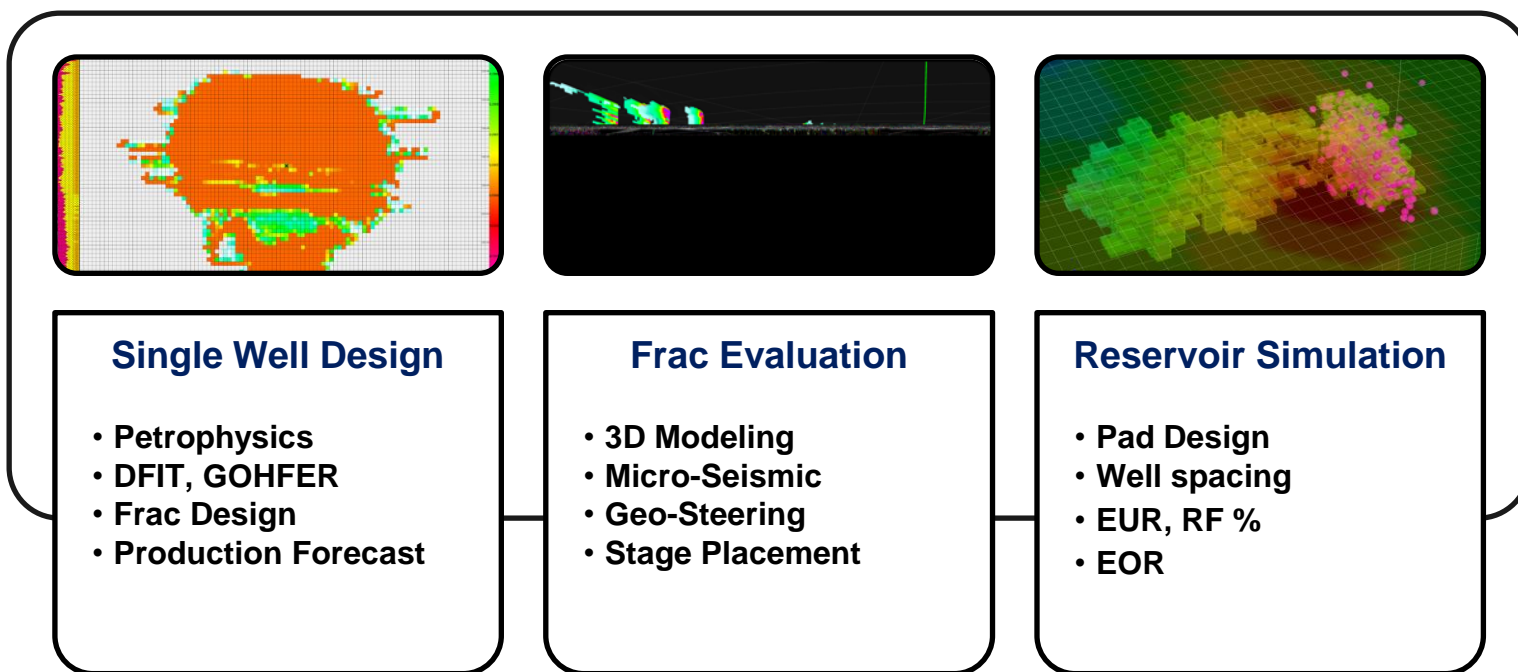
Waterflood, gas injection, SAGD, chemical flood

The RESSTUDY service offering ensures data-driven decisions are made

2

# FRACWELL

FRACWELL can be used to optimize your existing wells or design and evaluate your upcoming drilling program

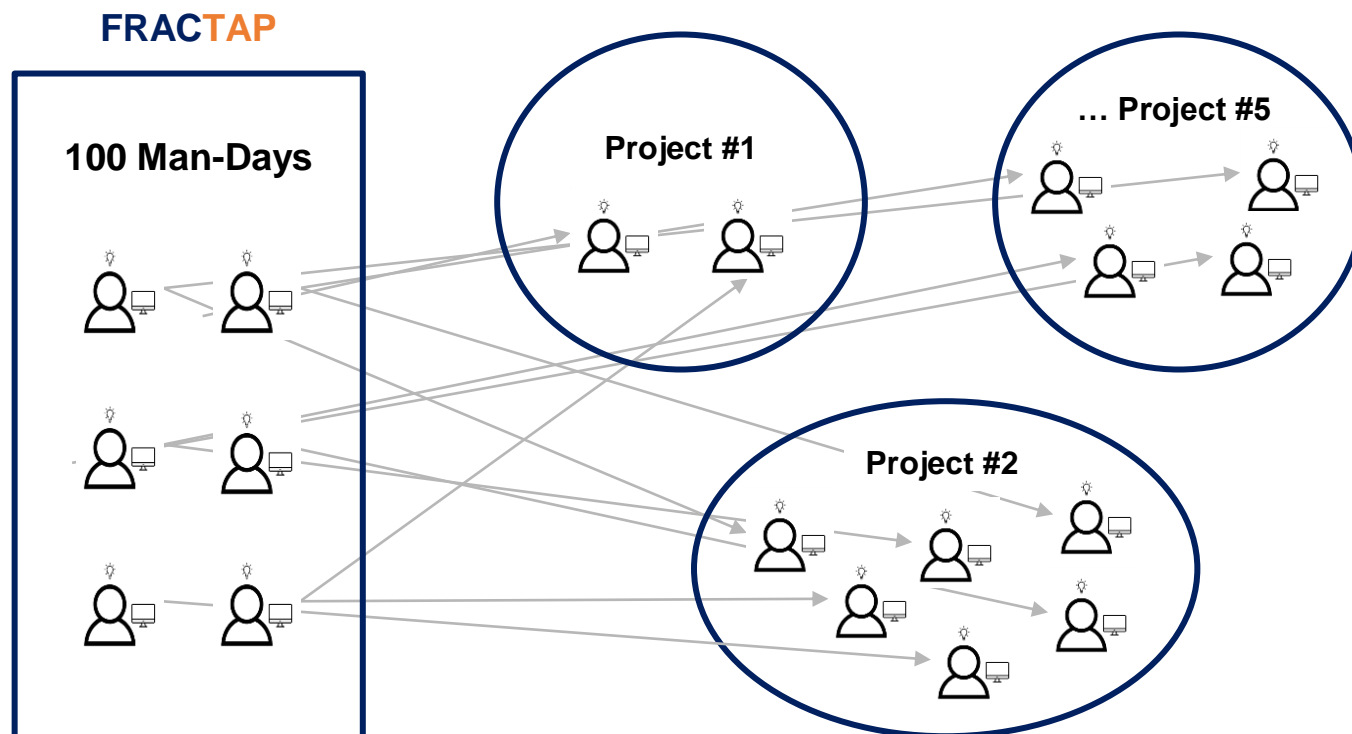


The FRACWELL service offering ensures value-driven decisions are made



## FRACTAP

FRACTAP is our unique “Team-on-Tap” model to allocate our time and resources to multiple workstreams



The FRACTAP service offering gives you the flexibility to choose where and when we spend time based on your capital available

# Value Proposition

Deliver Value Through Two Primary Outcomes

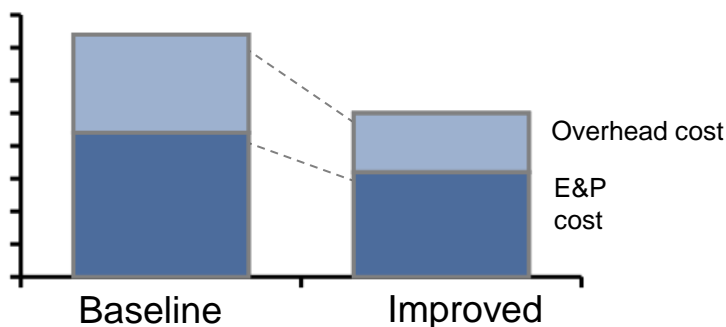
## Cost Reduction

- Reduce in-house expenses
- Design for savings

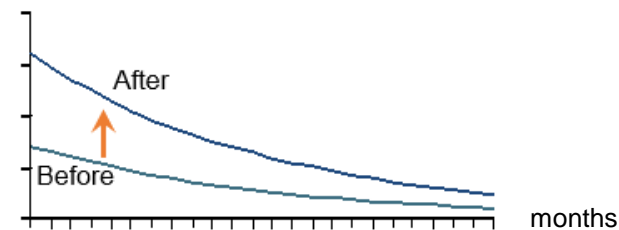
## Increase Revenue

- Leverage technology
- Design for increased EUR/IPs

cost/boe

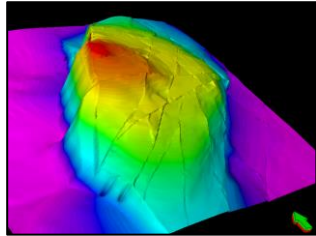


boe/d

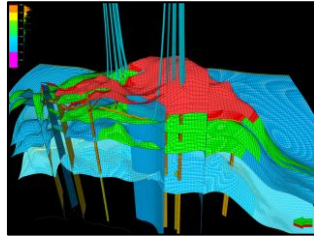


Add to the bottom line of your business

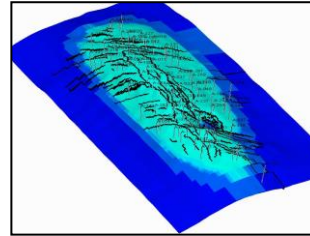
# International Experience



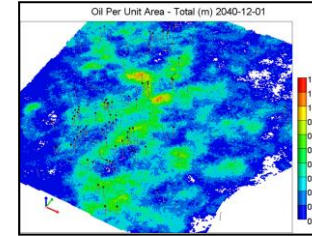
**Algeria**



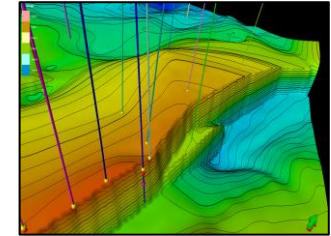
**Australia**



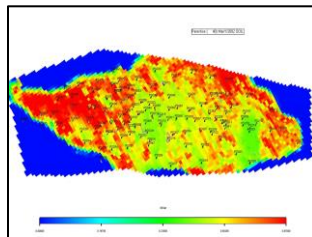
**Bahrain**



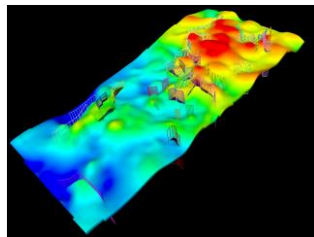
**Canada**



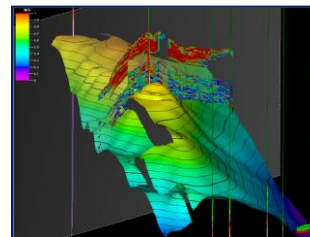
**Colombia**



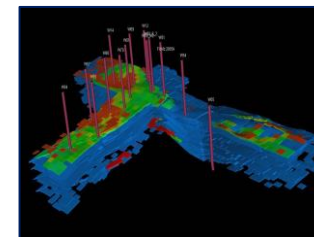
**France**



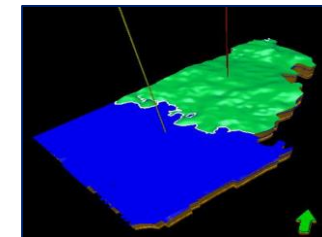
**India**



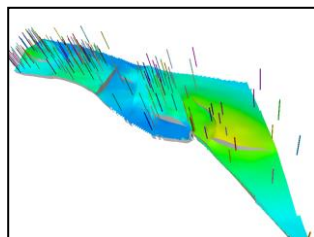
**Iraq**



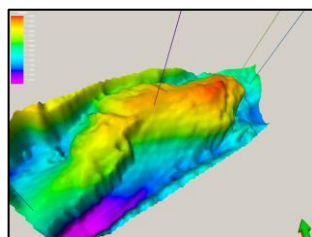
**Kazakhstan**



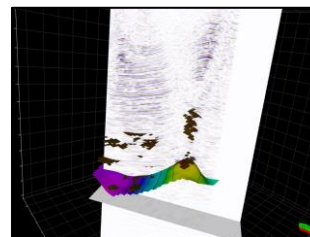
**Nigeria**



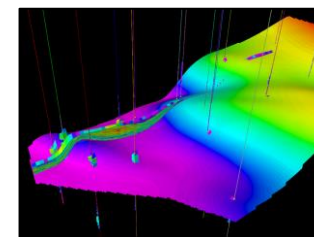
**Russia**



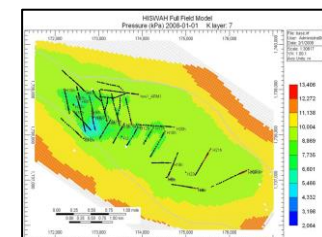
**Trinidad**



**Turkey**



**USA**



**Yemen**


**Learnings from world class reservoirs worldwide can be applied on your projects**


# In-House Technology

## Software

EMERSON (PARADIGM): Geolog 

SCHLUMBERGER: Eclipse, Petrel 

HALLIBURTON: Gohfer 

CMG: IMEX, GEMS, STARS 

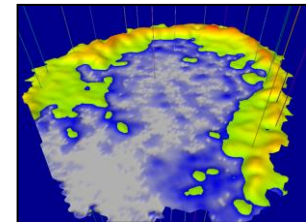
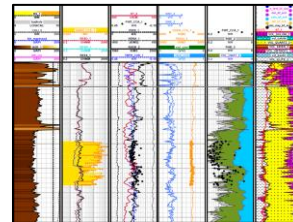
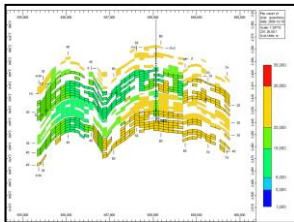
ROCK FLOW DYNAMICS: t-Navigator 

MICROSOFT POWER BI: Data Analytics 

KAPPA: Saphir 

## Hardware and Computing Power

- Workstations with 24, 48, 68 Core Processing
- GPU Computing
- Cloud Computing with Amazon
- For larger projects, multiple realizations, and quick turn-around: we can scale-up using cloud computing



Acquired and equipped with industry leading software - investment of over \$1MM in the most current and up-to-date versions

# Contact Us

[www.fracmod.com](http://www.fracmod.com)

**Fracture Modeling Inc.**

421 7 Ave SW #1800  
Calgary, AB T2P 4K9

**Mailing Address:**

111 - 5th Ave SW  
Calgary, AB T2P 3Y6

**Office Phone:**

587-352-3727

**General Inquiries:**

403-461-8698

**Email:**

[info@fracmod.com](mailto:info@fracmod.com)



Our team of experts have served clients in over 30 countries and would be happy to answer any questions